

SPEAK ENGLISH WITH CONFIDENCE

LEARN WITH THE WORLD'S
ENGLISH EXPERTS

www.britishcouncil.ps



ABOUT THE BRITISH COUNCIL

We are the United Kingdom's organisation for cultural relations and educational opportunities.

Our purpose is to create international opportunities for the people of the UK and other countries and build trust between them worldwide.

We operate in 110 countries, building engagement and trust in the UK through the exchange of knowledge and ideas between people worldwide.

In the Middle East and North Africa (MENA), we operate in 17 countries from Morocco to Oman.

We opened our offices in Palestine in 1943 to build stronger ties and greater mutual understanding between Palestinians and the UK.

OUR WORK, SERVICES AND PROGRAMMES

Our interconnected areas of work are English, the arts, education and society. We work in Palestine with a wide range of partners to extend our outreach, enhance our impact and promote positive change. Despite often challenging circumstances, we continue to establish relationships and initiate opportunities between people in Palestine and the UK.

Our work in Education

Our work in Education focuses on supporting policy and linking students and teachers in the UK and Palestine. Each year we offer young Palestinians scholarships to pursue graduate and postgraduate studies in range of subjects in Palestinian and UK universities.

Our programme of higher education scholarships for Palestinians (HESPAL) aims to create the next generation of senior academics who can maintain standards of international quality in Palestinian universities and develop further sustainable links between Palestinians and UK universities.

Our work in English and Exams

We support the Ministry of Education and the United Nations Relief and Works Agency (UNRWA) to build capacity and improve the standards of English language teaching in schools in Palestine.

We develop the skills of future school teachers and enhance English language capacity and improve the standards of English language teaching in schools in Palestine.

We develop the skills of future school teachers and enhance English language capacity in universities by expanding our pre- and in-service



© Mat Wright

training to students and university staff. Due to high demand for English language teaching in Palestine, we have reintroduced direct training for both the general public and organisations.

In our accredited examination centres in Jerusalem, Ramallah, Nablus, Hebron and Gaza we hold a wide range of academic and professional exams, including the International English Language Testing Service.

Our work in Arts

Amid a vibrant cultural scene in Palestine, we constantly aim to introduce contemporary UK arts and implement programmes focusing on film, music and dance for younger, more diverse and larger audiences. We ensure that more vulnerable communities in refugee camps and Area C are fully included. We work with professional partners on festivals, performances and exhibitions, in addition to a range of projects, programmes, workshops and seminars. We believe in the power of arts to bring about change and encourage creative conversation and exchange between artists and communities in Palestine and the UK. As part of our commitment to diversity and inclusivity, we work with children with disabilities and their teachers to expose them to art as a means of self-expression.

Our work in Society

We work with partners to develop and strengthen public institutions and civil society through the management of projects and the creation of learning and development opportunities for young people in Palestine. We empower young Palestinian leaders from diverse communities, particularly in Area C, Gaza and Jerusalem, to bring about positive change through capacity building in citizenship, leadership, advocacy, volunteering, social action, project delivery, fundraising, entrepreneurship and networking. We manage and deliver a range of large-scale projects on behalf of international partners and donors.



OUR TEACHING METHODOLOGY

Our English language teaching is based upon the latest research in language learning. We believe in:

Learning English through English.

In the classroom we expect students to use as much English as they can, both with the teacher and with other students. We aim to create an English speaking environment so that you get as much language practice as possible and, through that, understand more about how the English language works.

Learning through working

together. During your lessons, you will be working on learning activities with other students, in pairs and in groups, giving you opportunities to speak a lot, try out new language and learn from each other.

Learning in different ways. We know all our students are different, so lessons will try to accommodate

different learning abilities and preferences. Sometimes lessons will focus on grammar or pronunciation or vocabulary or all of these. At the same time, you will be practising speaking, listening, reading and writing. Don't expect to sit in your seat for the whole lesson – be prepared to try varied ways of learning!

Learning with professional

resources. Our teachers bring with them global expertise in teaching quality English classes. We employ experienced and qualified teachers who use creative, modern and interactive teaching techniques. We offer our students a wide range of digital resources and access to the British Council's online learning platforms.



WHAT COURSES DO WE OFFER?

Speak English for Adults

We focus on the four language skills: reading, writing, listening and speaking, with an extra focus on speaking and pronunciation. These courses are the best option for building your confidence through a solid foundation in English.

English for Kids and Teens

Build your child's confidence by developing their ability in listening, reading, writing and speaking skills. These classes are different from school as they provide your child with a regular, fun, and rewarding learning experience. Our Young Learner classes are taught by specialised and experienced English teachers.



English for Employment *(Nablus only)*

Increase your employability by learning how to work in an English-speaking environment. Our courses focus on tasks and situations in professional life, and build practical communication skills.

Courses for companies and organisations

We offer a wide variety of courses to clients, including tailored business English courses, conversation courses and English for specific sectors such as banking, telecommunications or sales.



© Mat Wright

Private one-to-one courses

We can provide courses of tailored content and length, including IELTS preparation, conversation skills, academic writing and advanced pronunciation.

Teacher Training

We offer teacher training to schools, including TKT courses and tailored teaching skills workshops.





© Mat Wright

Online learning resources

British Council is keen on promoting and supporting English language training through digital resources. General information, practice exercises, children's fun activities and much more can be found on the following websites:

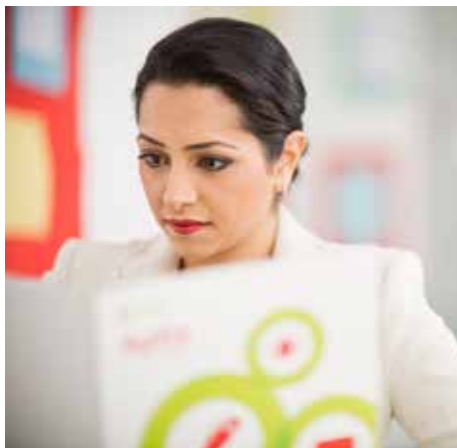
www.learnenglish.britishcouncil.org/ar

www.teachenglish.org.uk

www.learnenglishkids.britishcouncil.org/ar

INTERNATIONALLY-RECOGNISED QUALIFICATIONS

We offer a range of internationally-recognised exams for customers; listed below are the exams and the courses we offer to help you prepare for the exam. Choose the exam that best suits you.



© Mat Wright

English Course	Exam
Speak English (Pre-Intermediate and higher)	IELTS KET PET FCE
English for Teens (Pre-Intermediate and higher)	KET for Schools PET for Schools FCE for Schools
English for Employment	IELTS
English for Companies and Organisations	IELTS

WHEN ARE YOUR COURSES?

Young Learner courses for students from 6 – 15 years old are 20 hours in length. We run three regular courses and two summer schools throughout the year. Regular courses are generally in the mornings or early afternoons.

Adult courses are 40 hours in length. Classes are generally on week days and in the evenings. We run four adult courses throughout the year.

For more information about upcoming courses, call us at: + 970 (0)2 296 3293 or visit our website: **www.britishcouncil.ps**

HOW DO I REGISTER?

Before joining a course you need to take a level test to make sure you start at the most appropriate level.

For the next available course and to book an appointment for the level test please contact our customer services team.

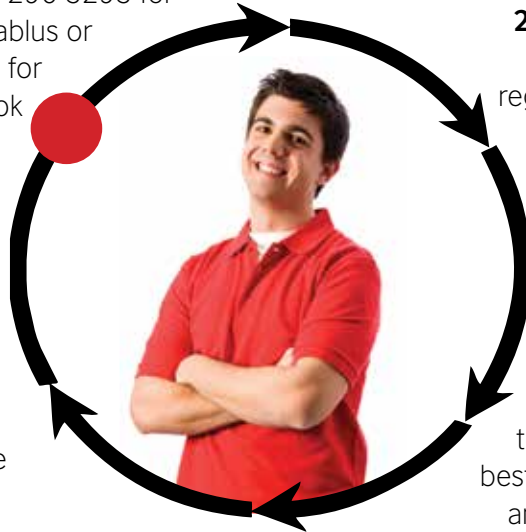
1. Call us on 02 296 3293 for Ramallah and Nablus or on 02 626 7111 for Jerusalem to book a level test

2. Arrive and complete registration forms

3. Take the level test

4. Consult with one of our teachers on the best course for you and register

5. Enjoy your course and re-register for another course



COURSE DETAILS AND FEES

Young Learner Courses

Age group	6 – 15 years
Duration	20 hours
Fees for new students	550 NIS
Fees for old students	*500 NIS
Book fees	**approximately 105 NIS
Level test fees	50 NIS

Adult Courses

Age group	16 years and above
Duration	40 hours
Fees for new students	1050 NIS
Fees for old students	*950 NIS
Book fees	**approximately 70 NIS
Level test fees	60 NIS

Private Lessons

Duration	according to your needs
Fees	250 NIS / hour
Book fees	Depends on course content
Level test fees	N/A

English for Employment (Nablus)

Age group	18 years and above
Duration	20 hours
Fees for new students	500 NIS
Fees for old students	*450 NIS
Book fees	None
Level test fees	60 NIS

* Discount for old students registering before end of term.

** Books are purchased directly from Sharbain's Bookshop, and the price is set by the seller. The prices above are not guaranteed.

Offers and discounts:

- For Speak English courses, take five courses and receive the sixth for free.
- Early bird discount of 100 NIS for old students for Speak English courses.
- For kids and teens courses, take four courses and receive the fifth for free.
- Early bird discount of 50 NIS for young learner courses.
- Sibling discounts for young learner courses.

Check our website www.britishcouncil.ps
for more information about upcoming courses.

PAYMENT AND REFUND POLICY

Payment can be made by cash, debit cards or credit cards.

If we cancel a course, you can receive a full refund, paid by cheque, or a full credit note if you prefer.

If you wish to withdraw from a course before the first lesson begins, you can receive either a refund minus admin fee or a full credit note if you prefer.

It is not possible to issue refunds after a course has started. In exceptional circumstances, such as family crisis or for medical reasons, we may give

a partial refund or a credit note valid for six months. This is at the discretion of the Teaching Centre Business Manager.

In all cases of refunds, you must complete the Refund Request Form, and will receive the refund as a cheque within 10 working days. It is not possible to refund money in cash.

The administration fee for all refunds is 100 NIS, regardless of the course fees.

All credit notes are valid for six months only from date of issue.

QUALITY STANDARDS, GRIEVANCE AND COMPLAINTS

British Council values your opinion and input. To provide the quality of teaching we promise, we encourage students to speak to us and give us feedback.

Most problems can be resolved through speaking with your teacher, who will be happy to help you. If you would like a translator to assist you in explaining anything to your teacher, you can ask at the reception desk, or call us to request this.

If your teacher cannot solve the problem, or you feel that you cannot speak to the teacher, please speak

to reception and ask them to arrange a meeting with a manager. This meeting will take place within three days, and translation is also available if you request it.

We have a detailed complaints policy which is available upon request.

We pride ourselves with the positive learning environment of our classrooms. Staff and students work together to achieve a friendly and professional atmosphere that makes everyone feel comfortable.

If you have any suggestions, please submit them to you teacher, in the suggestion box, in our centres, to any member of staff or by email.

GOOD RELATIONSHIPS

British Council Palestine asks all students and staff to be polite and respectful at all times. If you feel that you have been treated badly by another student, or by a member of staff, please speak to your teacher or to a manager. We have a detailed behaviour policy available on request.

The British Council recognises that we have a fundamental duty of care towards all children we engage with, including a duty to protect them from abuse. We achieve this through compliance with UK child protection laws and relevant laws in each of the countries where we operate, as well as by adherence to the United Nations Convention on the Rights of the Child (UNCRC) 1989.

The British Council is committed to a policy of equality, diversity, and inclusion, and welcomes applicants from all communities. We work to ensure that people are not unjustifiably discriminated against on the basis of age, disability, ethnicity, gender, religion or belief, sexual orientation or any other irrelevant grounds. We will make reasonable adjustments to accommodate students with specific requirements wherever possible.

OUR ENGLISH LANGUAGE CENTRES

Jerusalem

80 Nablus Road 9720079, PO Box 19136, Jerusalem 9711025

Telephone: +972 (0)2 626 7111

Fax: +972 (0)2 628 3021

Opening hours:

Monday, Tuesday and Thursday: 10.30 - 15.30

Wednesday and Friday: 09.00 - 14.00

Jerusalem English Language Centre

80 Nablus Road, PO Box 19136, Jerusalem 9711025

Ramallah

Michel Centre, Jaffa Street

Telephone: + 970 (0)2 296 3293

Fax: + 972 (0)2 296 3297

Opening hours:

Sunday, Monday and Wednesday: 10.30 - 15.30

Tuesday and Thursday: 09.00 - 14.00

Ramallah English Language Centre

Centre for Continuing Education of Birzeit University (partner institution), Al-Masa Building (6th Floor), Al Irsal Street, Ramallah

Nablus

Al Najah University (partner institution), Scientific Centre, 6th floor, (Old Campus)

CONTACT INFORMATION

For enquiries, call us on: **+972 (0) 2 296 3293**

Email: **information@ps.britishcouncil.org**

You can get further information from our website:

www.britishcouncil.ps



British Council Palestine



@ps_British

The information contained in this brochure is available online and also in other formats on request.

British Council © 2016

The British Council is the United Kingdom's international organisation for cultural relations and educational opportunities.